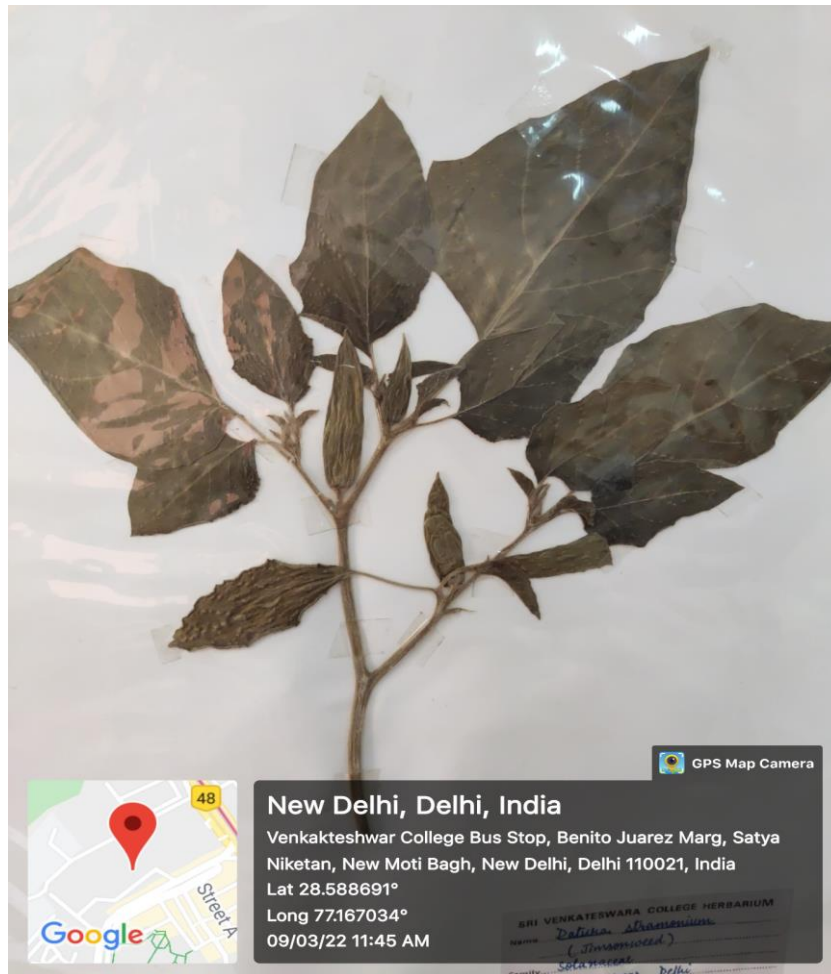


# *Datura stramonium*



**Common Name:** Dhatura, Thorn Apple, Jimsonweed

**Scientific Name:** *Datura stramonium*

**Family:** Solanaceae

It is an annual, freely branching herb that forms a bush. The root is long, thick, fibrous and white. The stem is stout, erect, leafy smooth and pale yellow-green to reddish-purple. The upper surface of the leaf is a darker green and the bottom is light green. The leaves have a bitter and nauseating taste. The fragrant flowers have a pleasing odour. The seed is egg-shaped covered with spines or bald

**Economically Important Part:** Seeds, Leaves, Fruit

**Economic Importance:** The active agent in Datura is atropine which has been used in traditional medicine. The leaves are generally smoked either in cigarettes or pipes. It is used in the treatment of Asthma, Bronchitis like respiratory diseases. Seeds and leaves are used in the treatment of insomnia.